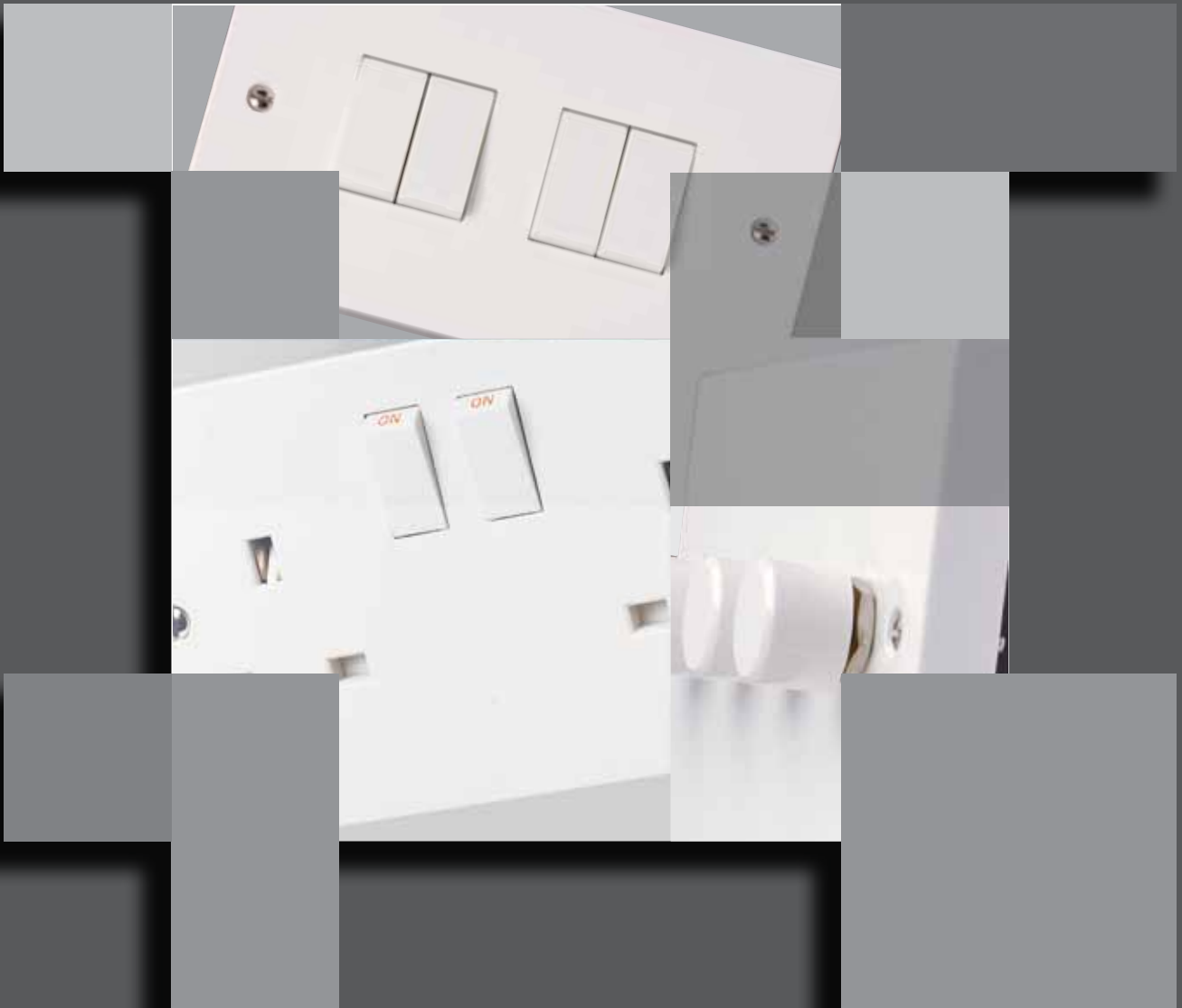


# accessories

Most domestic wiring needs satisfied



**CLICK**<sup>®</sup>  
accessories

# click accessories

A unique range of electrical products  
for all domestic electrical wiring needs...



SCOLMORE International has become a significant force in the electrical accessory market. In that time the CLICK brand of domestic electrical accessories has become synonymous with Innovation, Quality and unprecedented Value for Money.

Our factory is ISO9002 approved and is also Licensed under the BS Kitemark Approval Scheme as it relates to plug and socket products covered by BS1363 and where indicated on the following product pages. The Kitemark symbolises our commitment to monitoring and maintaining the highest possible quality standards now and in the future.

## contents

<b>Switches</b> .....	<b>g4</b>
<b>45A &amp; 50A Accessories</b> .....	<b>g12</b>
<b>Socket Outlets</b> .....	<b>g14</b>
<b>Fused Connection Units</b> .....	<b>g16</b>
<b>Telephone Socket Outlets</b> .....	<b>g18</b>
<b>TV &amp; Satellite Outlets</b> .....	<b>g19</b>
<b>Flex Outlet &amp; Blank Plates</b> .....	<b>g20</b>
<b>Pattress Boxes</b> .....	<b>g21</b>
<b>Essentials</b>	
<b>Data Accessories</b> .....	<b>g24</b>
<b>Cavity Wall Boxes</b> .....	<b>g25</b>
<b>Galvanised Steel KO Boxes</b> .....	<b>g26</b>

# accessories selection

The CLICK range of electrical products covers virtually everything you will need for domestic electrical installations. The CLICK range is available through a national network of Approved Stockists throughout the UK and Ireland.

Our stockists carry substantial stocks of all CLICK products and our efficient delivery service can quickly deal with those unexpected requirements!

The four cornerstones of our trading philosophy are Quality, Stock, Service and Price. We recognise that our customers always have a choice. Our aim is to satisfy our customers' needs to discourage them from seeking an alternative supplier.

Our growth over recent years bears testimony to the service levels and value for money which we offer our customers. We intend to continue this growth trend by constantly increasing the range and quality of our products and our level of service.

In an increasingly competitive marketplace these goals become more and more difficult to achieve, but this is the target we have set ourselves and we are confident that we can succeed.

All CLICK products are manufactured to the highest quality levels in our industry and comply with all relevant British and European standards. Guarantees of up to 10 years against materials or manufacturing faults show how confident we are in our product quality.

## Scolmore Commitment

Our aim is to provide a range of high quality, feature packed products at the most competitive prices possible. The quality of packaging and presentation should match the high product quality. These products must then be made available for delivery to our customers expediently and in accordance with their instructions. At all times and in all ways, we must make each customer feel like our most important customer.



accessories

# switches

10A Plate Switches (Modular) • 10A Architrave Switches (Modular)

Dimmer Switches • Control Switches

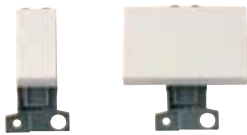
45A Switches



All 10A plate switches feature individual switch modules - all fully interchangeable between plastic and metal ranges - thus providing optimum flexibility in wiring.



# switches



The products illustrated in this section of the catalogue are finished plates and unfurnished mounting plates. For comprehensive information on the full range of modules available please refer to our CLICK MINIGRID product brochure.



# switches

10A Plate Switches (Modular)

## 10A Plate Switches (Modular)

WA010	1 Gang 1 Way 10A Switch
WA011	1 Gang 2 Way 10A Switch
WA012	2 Gang 2 Way 10A Switch
WA013	3 Gang 2 Way 10A Switch
WA019	4 Gang 2 Way 10A Switch
WA105	6 Gang 2 Way 10A Switch

See MiniGrid modules catalogue

Simple, single screw fixing of each module allows unprecedented flexibility in customising switch assemblies



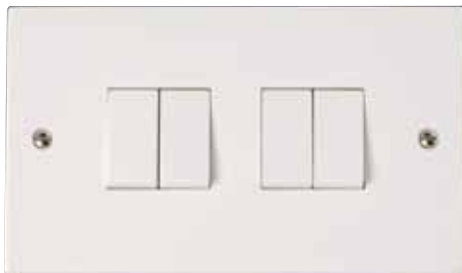
WA010/011



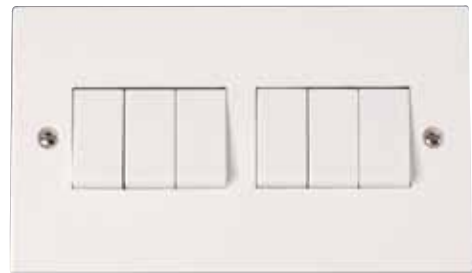
WA012



WA013



WA019



WA105

**CLICK**<sup>®</sup>  
MINIGRID

# switches

10A Plate Switches (Modular)

10A Architrave Switches (Modular)



WA015

### 10AX Plate Switches (Modular)

WA015	1 Gang 2 Way 10A 'Paddle' Switch
WA025	1 Gang Intermediate 10A Switch
WA026	1 Gang 2 Way 10A Keyswitch
WA027	1 Gang 1 Way 10A Retractive 'Bell' Switch
WA110	1 Gang DP 10A 'Emergency Test' Keyswitch

### 10AX Architrave Switches (Modular)

WA171	1 Gang 2 Way 10A Architrave Switch
WA172	2 Gang 2 Way 10A Architrave Switch

See MiniGrid modules catalogue



WA026



WA027



WA110



WA171



WA172



**Switch Plates Unfurnished (Modular)**

WA401	Single Switch Plate – 1 Aperture
WA402	Single Switch Plate – 2 Aperture
WA403	Single Switch Plate – 3 Aperture
WA404	Twin (2+2) Switch Plate – 4 Aperture
WA406	Twin (3+3) Switch Plate – 6 Aperture
WA426	Twin (6 in-line switch plate - 6 aperture)

See MiniGrid modules catalogue



WA401



WA402



WA403



WA404



WA406



WA426

The unfurnished plates referred to above are designed for the installation of CLICK MINIGRID Modules.



# switches

Rotary Dimmer Switches (Tungsten Filament & Mains Halogen)

Rotary Dimmer Switches (12V Halogen - Inductive)



WA143/147

### Rotary Dimmer Switches (Tungsten Filament & Mains Halogen) (Push On/Off)

WA140	1 Gang 2 Way 400W Rotary Dimmer Switch
WA141	1 Gang 2 Way 250W Rotary Dimmer Switch
WA142	2 Gang 2 Way 250W Rotary Dimmer Switch
WA143	3 Gang 2 Way 250W Rotary Dimmer Switch
WA144	4 Gang 2 Way 250W Rotary Dimmer Switch

### Rotary Dimmer Switches (12V Halogen - Inductive) (Push On/Off)

WA145	1 Gang 2 Way 250Va Rotary Dimmer Switch
WA146	2 Gang 2 Way 250Va Rotary Dimmer Switch
WA147	3 Gang 2 Way 250Va Rotary Dimmer Switch
WA148	4 Gang 2 Way 250Va Rotary Dimmer Switch

We recommend the use of branded halogen lamps with all CLICK dimmers. The use of inferior, non-branded lamps may require the nominal rating of the dimmer to be reduced.



WA142/146



WA140/141/145



MD9001



SP900

### Interchangeable Dimmer Switch Modules

MD9010	0-10V Analogue dimmer module (25X62X22mm)
MD9001	6A 2 Way push on/off (non-dimmable) module (25X62X22mm)
MD9020	250W 2 Way resistive/inductive dimmer module (25X62X22mm)
MD9040	400W 2 Way resistive/inductive dimmer module (25X62X22mm)

SP900 Dimmer M10 nut runner tool

Use the nut runner to easily exchange dimmer modules and create customised dimmer switch plates.



WA144/148

## 20A Sink / Bath Switch

---

WA024	20A DP Sink Bath Switch with Neon
-------	-----------------------------------

---

Community Design Registration No. 000427463-0001

## Fan Isolation / 3 Pole Switches

---

WA020	3 Pole 10A Fan Isolation 'ON/OFF' Switch
WA021	3 Pole 10A Switch – Unprinted

---



WA021



WA020



WA024

# switches

20A Control Switches

## 20A DP Switches With Optional Flex Outlet

WA022	20A DP Switch
WA023	20A DP Switch
WA040	20A DP Switch 'Water Heater'
WA042	20A DP Switch 'Water Heater' and Neon



WA022



WA023



WA040



WA042

# 45A & 50A accessories

45A Plate Switches  
45A/50A Pull Switches

### 45A Plate Switches

WA200	1 Gang 45A DP Switch
WA201	1 Gang 45A DP Switch with Neon
WA202	1 Gang 45A DP Switch - Double Plate
WA203	1 Gang 45A DP Switch with Neon - Double Plate

### 45A/50A Pullcord Switches

WA210	45A DP Pullcord Switch with Mechanical 'ON/OFF' and Neon Indicator
WA211	50A DP Pullcord Switch with Mechanical 'ON/OFF' and Neon Indicator (Featuring Twin Terminal Screws)
WA213	50A DP Pullcord Switch with Mechanical 'ON/OFF' and Neon Indicator (Featuring Twin Terminal Screws) C/W Patress



WA200



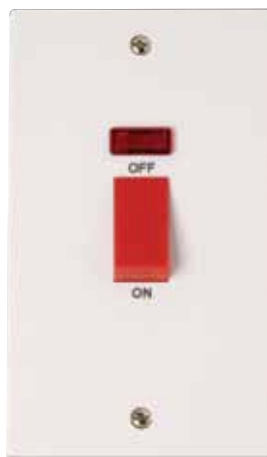
WA210/211



WA201



WA202



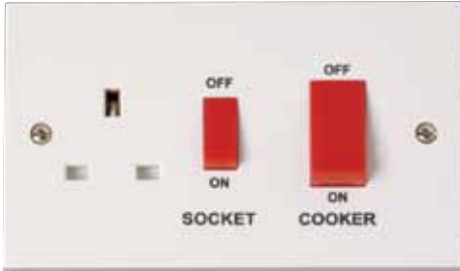
WA203



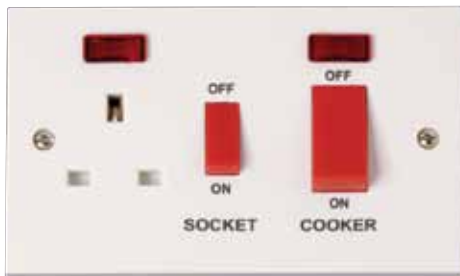
WA213

# 45A & 50A accessories

45A Switches And Cooker Control Units



WA204



WA205

## 45A Cooker Control Units

---

WA204 Cooker Control Panel with 13A Switched Socket Outlet and 45A DP Switch

---

WA205 Cooker Control Panel with 13A Switched Socket Outlet, 45A DP Switch and Neons

---

## 45A Cooker Outlet Plate

---

WA215 45A Cooker Outlet Plate

---



WA215

### 13A Socket Outlets

WA030	1 Gang 13A Socket Outlet
WA032	2 Gang 13A Socket Outlet (Fitted with Twin Earth Terminals)
WA035	1 Gang 13A DP Switched Socket Outlet
WA036	2 Gang 13A DP Switched Socket Outlet (Fitted with Twin Earth Terminals)
WA037	2 Gang 13A DP Switched Socket Outlet (Clean Earth)
WA606	2 Gang 13A Switched Socket Outlet



WA030



WA032



WA035



WA036/606



WA037

# sockets

Round Pin Socket Outlets

Dual Shaver Socket Outlet & Shaver Light



WA038



WA039

## Round Pin Socket Outlets

WA038	1 Gang 5A Round Pin Socket Outlet
WA039	1 Gang 2A Round Pin Socket Outlet

## Flush Mounted Shaver Socket Outlet & Shaver Light

WA100	Dual Voltage 115/230V Shaver Socket
MV600	Dual Voltage Shaver Light 115/230V Switched complete with 60W 284mm strip light

CLICK dual voltage shaver outlets incorporate a double wound isolating transformer rated 20Va at 230V or 115V and meets BS EN 61558-2-5: 1998 making it safe for use in bathrooms.



WA100



MV600

# fused connection units

**Fused Connection Units  
With Optional Flex Outlet**

WA049	3A Fused Connection Unit
WA050	13A Fused Connection Unit
WA051	13A Fused Connection Unit DP Switched
WA052	13A Fused Connection Unit DP Switched with Neon
WA053	13A Fused Connection Unit with Neon



WA049/050



WA052



WA051



WA053

# telephone, tv & satellite

The extensive range of communication accessories illustrated on the following pages bears testimony to the ever increasing demand for providing ever more flexible and practical wiring solutions for TV, radio, telephone, satellite and computer installations.

Refer also to our NEW MEDIA product brochure for even more communication solutions.



# telephone sockets

Telephone Socket Outlets

## Telephone Socket Outlets (PC)

WA115	RJ11 Flush Telephone Socket Outlet (Ireland/USA)
WA120	Telephone Master Socket Outlet - Single
WA121	Telephone Master Socket Outlet - Twin
WA125	Telephone Secondary Socket Outlet - Single
WA126	Telephone Secondary Socket Outlet - Twin



WA115



WA121/126/122/127



WA120/125/119/124

## Telephone Socket Outlets (Urea)

WA119	Single Urea UK Telephone Outlet - Master
WA122	Twin Urea UK Telephone Outlet - Master
WA124	Single Urea UK Telephone Outlet - Secondary
WA127	Twin Urea UK Telephone Outlet - Secondary

# tv & satellite

Satellite & Co-Axial Socket Outlets

Triplex Media Outlets



WA065/158



WA156



WA157



WA444



WA445

## Satellite & Co-axial Socket Outlets

WA065	1 Gang Co-axial TV Socket Outlet
WA066	2 Gang Co-axial TV Socket Outlet
WA156	1 Gang Satellite Outlet
WA170	1 Gang Co-axial and Satellite Outlet (Non-Isolated)

WA157	1 Gang Isolated Co-axial and Satellite Outlet
WA158	1 Gang Isolated Co-axial TV Socket Outlet
WA159	2 Gang Isolated Co-axial TV Socket Outlet

Isolated outlets will filter out any interference, if a 2 way signal is required, ie for use with satellite hard wire extensions, then a non-isolated outlet is required.

## Triplex Media Outlets

WA444	1 Gang Plate 4 signal outlet SAT, RET, TV, FM (1 Input cable + 1 Return cable)
WA445	2 Gang Plate 5 Signal Outlet SAT1, SAT11, TV, FM and RETURN (2 Input cables + Return cable)

Requires connection via media distribution unit

accessories

# flex outlet & blank plates

20A Flex Outlet • Blank Plates  
Central Heating Connector Box

## 20A Flex Outlet

---

WA017 20A Flex Outlet Plate with Terminals  
(optional bottom or centre flex outlet)

---

## Blank Plates

---

WA060 1 Gang Blanking Plate

---

WA061 2 Gang Blanking Plate

---

## Central Heating Connector Box

---

WA090 15A 10 Way Surface Connector Box  
(For use with central heating installations)

---



WA017



WA061



WA060



WA090

# pattress boxes

Moulded Surface Pattress Boxes - Urea



WA080

<b>Moulded Surface Pattress Boxes - Urea</b>	
WA080	1 Gang 16mm Deep Surface Pattress Box (with earth terminal)
WA081	1 Gang 25mm Deep Surface Pattress Box
WA082	2 Gang 25mm Deep Surface Pattress Box
WA083	1 Gang 35mm Deep Surface Pattress Box
WA084	2 Gang 35mm Deep Surface Pattress Box
WA085	1 Gang 47mm Deep Surface Pattress Box (with earth terminal)
WA086	2 Gang 47mm Deep Surface Pattress Box (with 'saddle' cord grip and earth terminal fitted)
WA089	Dual Accessory 29mm Deep Surface Pattress Box



WA084



WA086



WA089

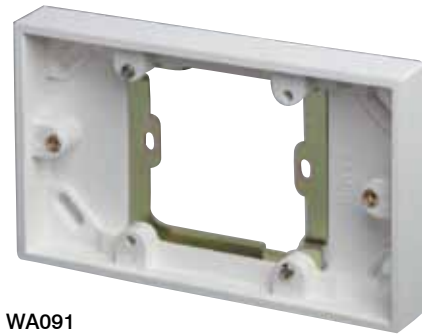
# pattress boxes

Converter Pattress Box • Architrave Surface Pattress Boxes

Moulded Surface Pattress Boxes – PVC

## Converter Pattress Box

WA091	1 Gang to 2 Gang Converter Pattress Box (16mm Deep)
-------	--



WA091

## Architrave Surface Pattress Boxes

WA175	1 Gang Architrave Switch Surface Pattress Box (with earth terminal)
WA176	2 Gang Architrave Switch Surface Pattress Box (with earth terminal)



WA176



WA175



WA230



WA235

## Moulded Surface Pattress Boxes – PVC

WA230	1 Gang 29mm Deep Pattress Box – Trunking
WA235	2 Gang 29mm Deep Pattress Box – Trunking
WA240	1 Gang 29mm Deep Pattress Box – Conduit 20mm knock-outs
WA245	2 Gang 29mm Deep Pattress Box – Conduit 20mm knock-outs

# CLICK<sup>®</sup> essentials

As we continue to expand the number and style of our wiring accessory ranges, each of these ranges is supported by our general essentials range of products comprising the following product groups:

## Floor media and socket outlets

Metal clad range

Leisure 'beige' range

Red accessories

Telephone and data accessories

Pull cord switches

Moulded and brass lamp holders

Metal knock-out boxes

Dry lining boxes

Longer plate fixing screws

Junction boxes

Link boxes

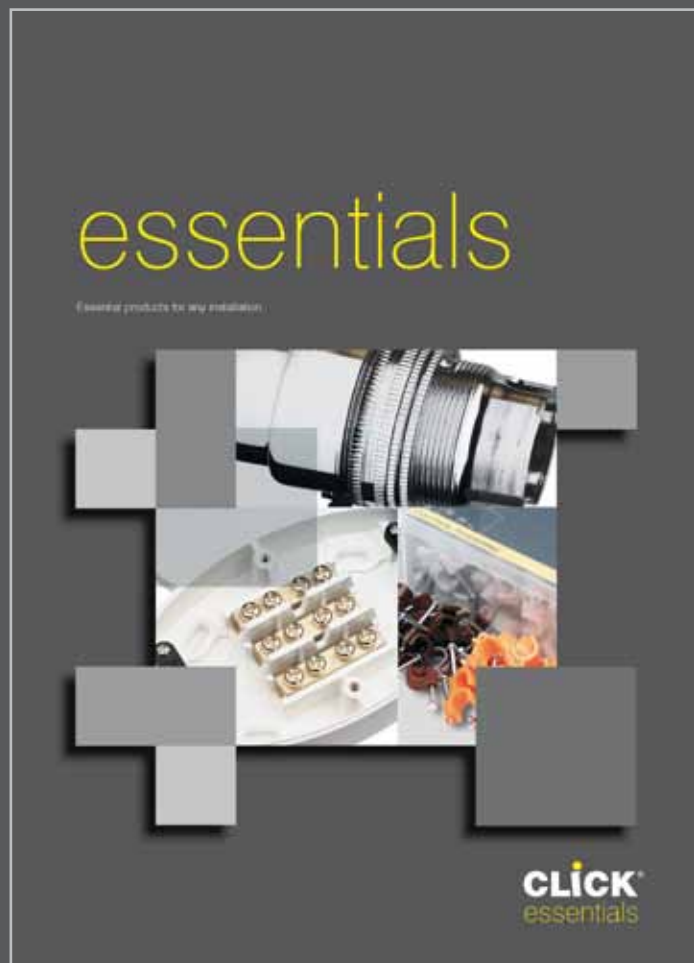
Cable clips

Extension cables

Connector strips

Ceramic connectors

Plugs and fuses



## Essential products for any installation

### Data Accessories

WA301	Single RJ45 Cat - 5e Complete
WA302	Twin RJ45 Cat - 5e Complete
WA310	RJ45 Single Plate Only
WA320	RJ45 Twin Plate Only
WA325	Pair of RJ45 1/2 Blanks
WA330	IDC Tool
WA340	RJ45 CAT-5e Module White



WA301



WA302



WA310



WA320



WA325



WA330



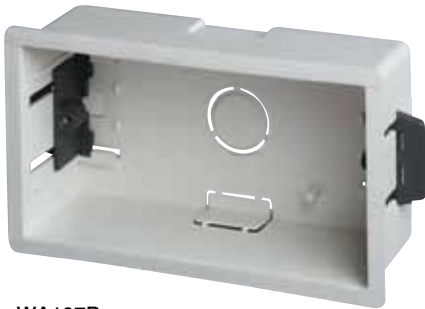
WA340

# flush mounting boxes

Cavity Wall Dry Lining Boxes • 'Ezylink' Dry Lining Box Connector  
Galvanised Steel Boxes



WA106P



WA107P



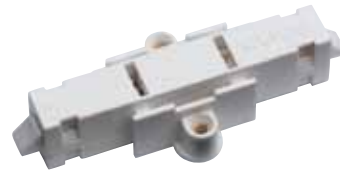
WA108P

## Cavity Wall Dry Lining Boxes

WA087P	1 Gang 35mm Deep Dry Lining Box
WA088P	2 Gang 35mm Deep Dry Lining Box
WA106P	1 Gang 47mm Deep Dry Lining Box
WA107P	2 Gang 47mm Deep Dry Lining Box
WA108P	Round Ceiling 34mm Deep Dry Lining Box

## 'Ezylink' Dry Lining Box Connector

GA100	'EZYLINK' Dry Lining Box Connector
-------	------------------------------------



GA100

# flush mounting boxes

Galvanised Steel Boxes

## Galvanised Steel Boxes

WA092	1 Gang 16mm Deep Galvanised Steel K.O. Box
WA093	1 Gang 25mm Deep Galvanised Steel K.O. Box
WA094	2 Gang 25mm Deep Galvanised Steel K.O. Box
WA095	1 Gang 35mm Deep Galvanised Steel K.O. Box
WA096	2 Gang 35mm Deep Galvanised Steel K.O. Box
WA097	1 Gang 47mm Deep Galvanised Steel K.O. Box
WA098	2 Gang 47mm Deep Galvanised Steel K.O. Box

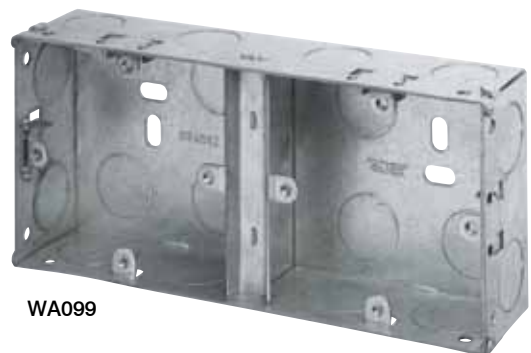
WA099	1+1 Dual Accessory Box - 35mm Deep
WA102	1+2 Dual Accessory Box - 35mm Deep



WA092



WA094



WA099