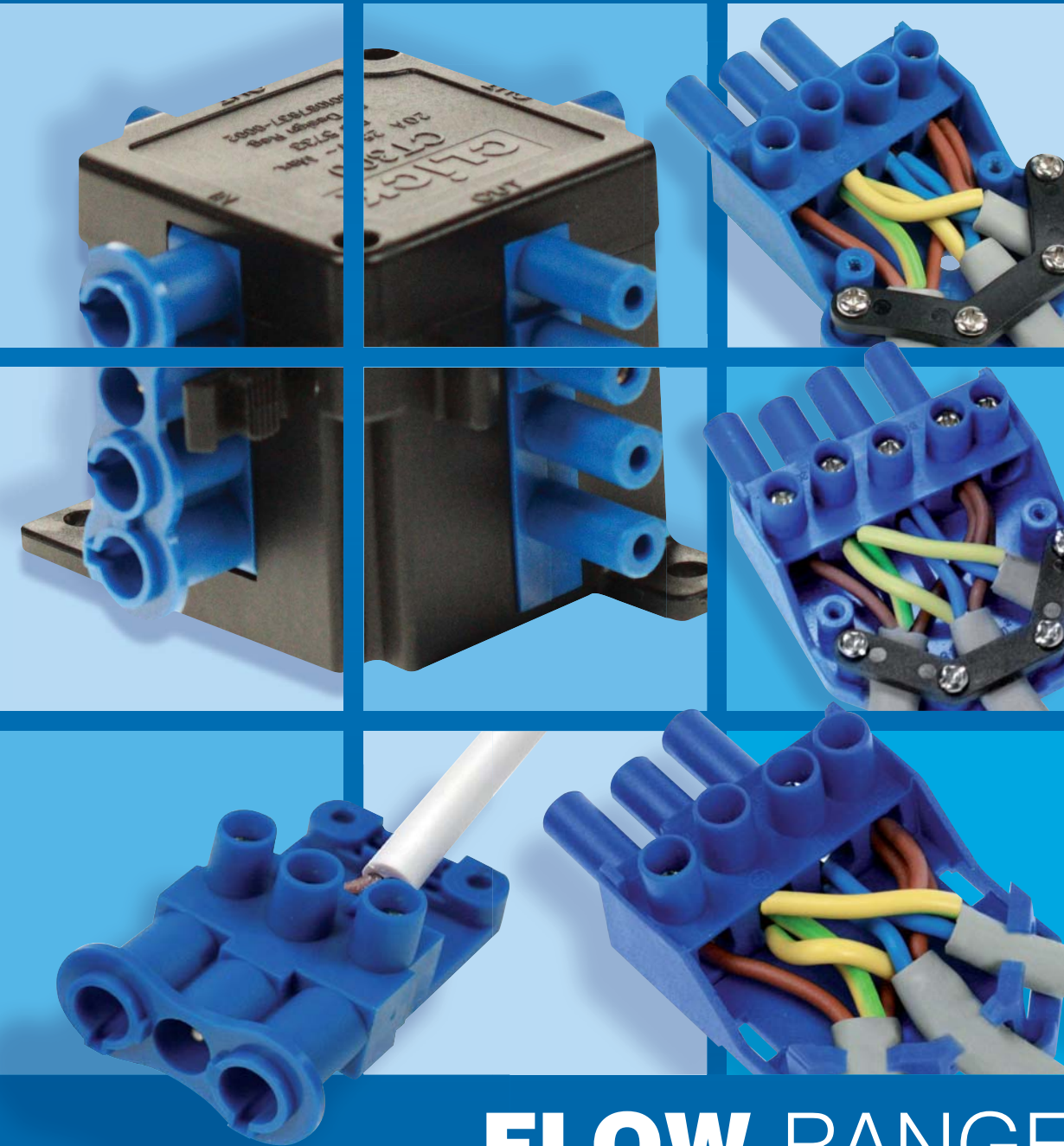


# CLICK<sup>®</sup> Flow

New additions to the CLICK wiring ranges



## FLOW RANGE

# The all in one junction box and connection system

We recognise that your time is money, our Plug-in connector gives you easy access with large terminals and fast connection.

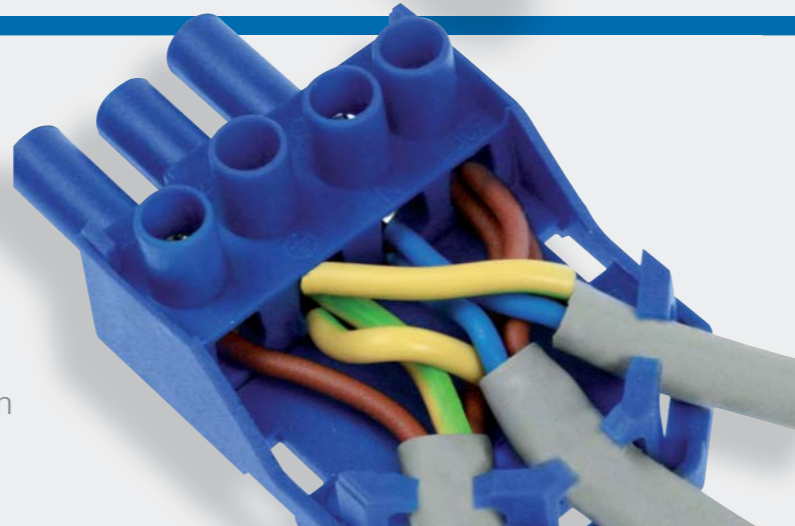
Designed initially for lighting circuits to enable isolation of transformers, control gear etc. whilst conducting the 1000V Insulation Resistance Test.

- 250V~ 20A Plug-In Connector
- Easy lock and release mechanism
- Large terminals with easy access
- Versatile, easy-connection system
- Terminal screws supplied raised



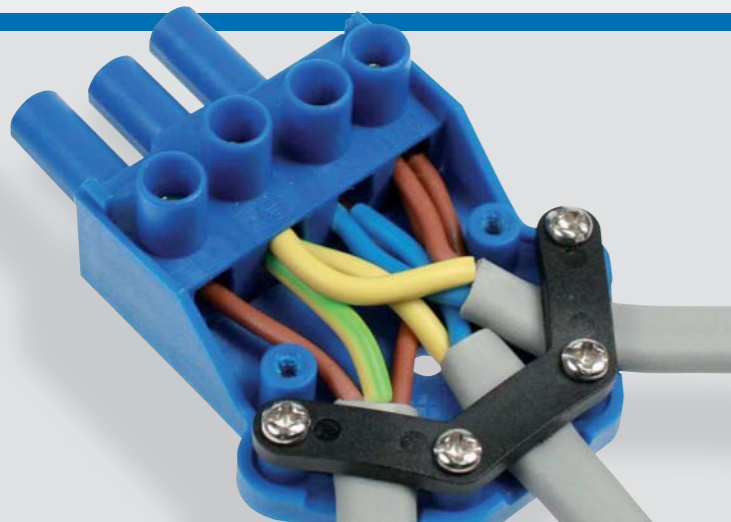
## CT101C

- Increased load handling with 20A rating
- Male: Max 1.5mm<sup>2</sup> 3 core cable; Female: Max 3 x 2.5mm<sup>2</sup> twin and earth (with additional loop terminal)
- Also available on a range of FlameGuard downlighters, see back page for more information
- Replaces the CT100C



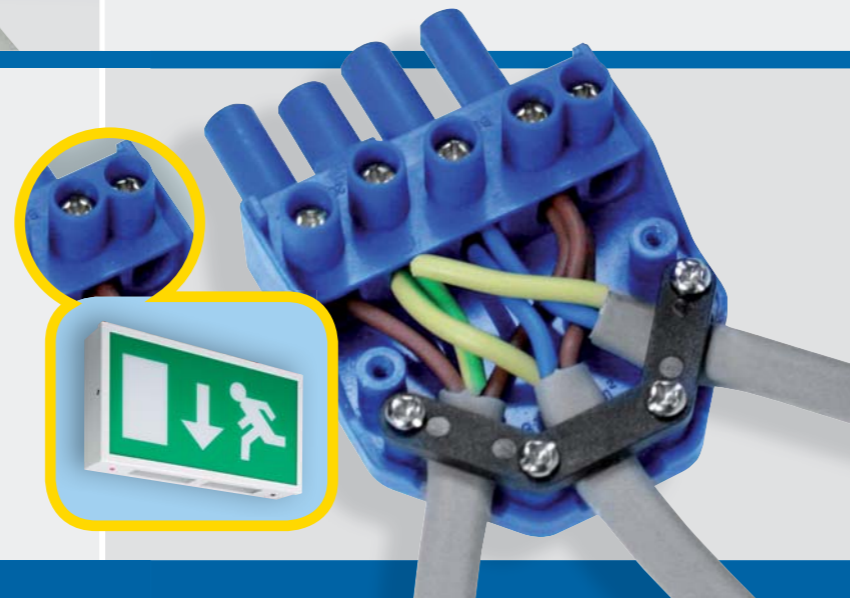
## CT102C

- 3 Pin Plug-in Connector with loop terminal. Cable grips for where the installation limits the fixing of the connector
- Cord restraint is fitted within the male connector



## CT202C

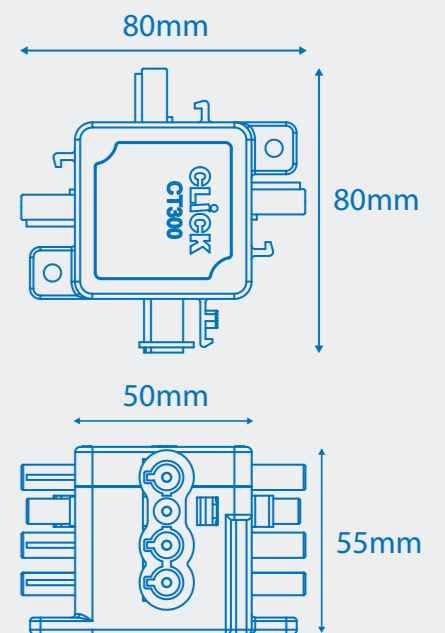
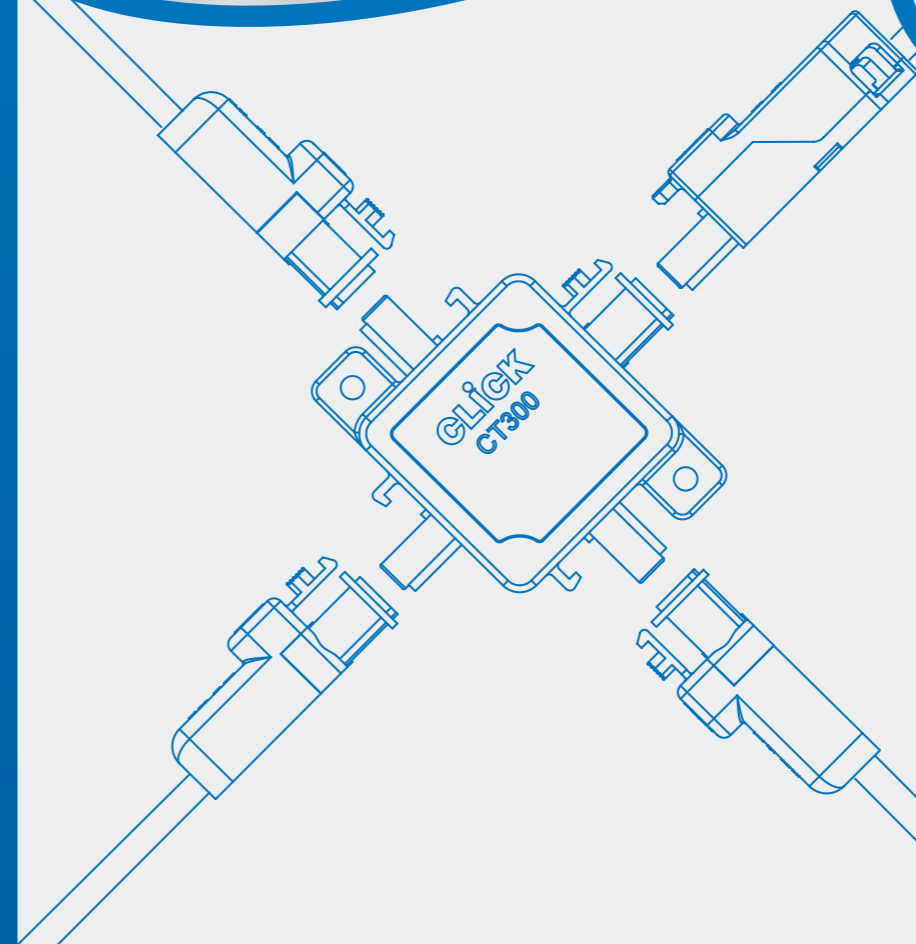
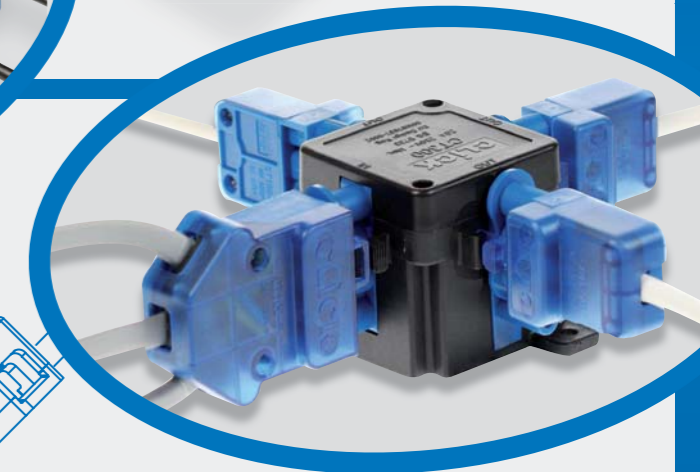
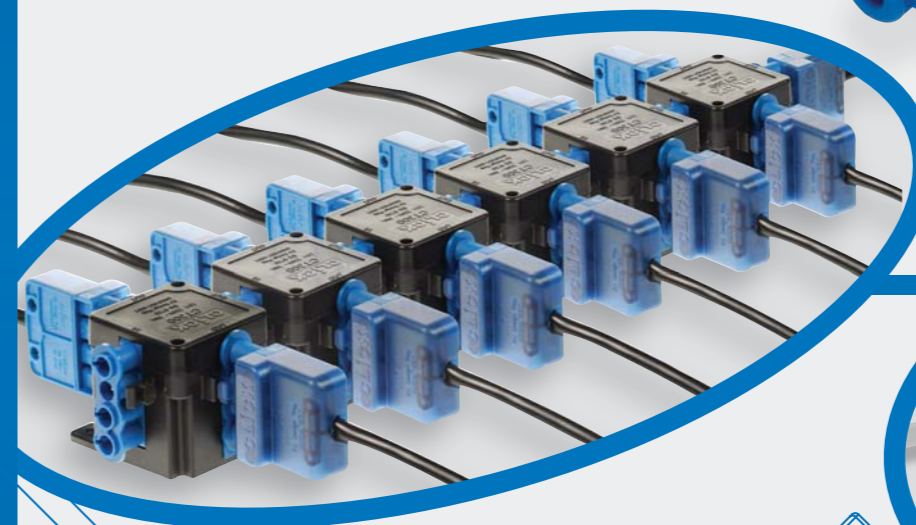
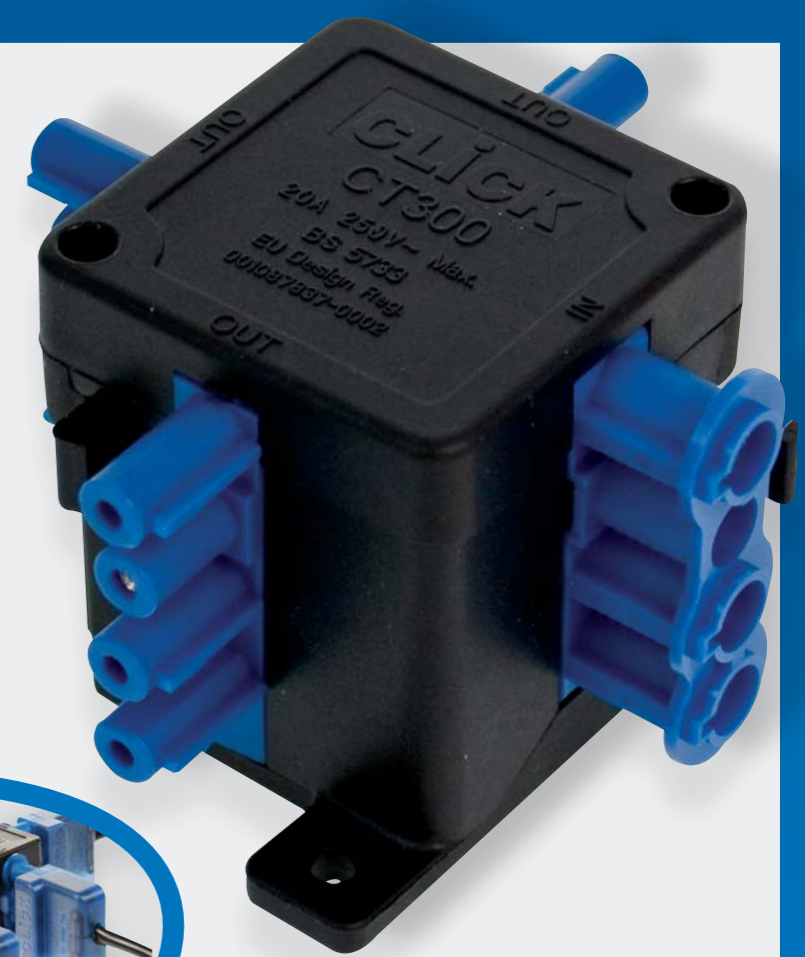
- 4 pin Plug-in Connector with Auxiliary terminals
- Auxiliary provides the opportunity for a second switched live or permanent feed for use typically with emergency lighting applications



# The Hub CT300C

Designed to take 3 pin or 4 pin plug-in connectors, giving you the flexibility to arrange circuits fast and easily.

- One Hub can be connected directly to another or via the link cables listed overleaf
- A quick and easy solution when adding lighting or appliances to an existing FLOW circuit



# Link Cables with the CT202C pre-wired.

- Separate link cables are available in 3 different lengths all supplied pre-wired to a 4 pin (CT202C) connector
- 6A 4 core link cables provide quick and easy connections between hubs and fittings



2m  
**CT802**



3m  
**CT803**



5m  
**CT805**

## Pre-wired FlameGuard Downlighters

Pre-wired range of low voltage, GU10 and GX53 FlameGuard Downlighters in a variety of designs.

- Supplied pre-wired with the CT101C
- Low Energy LED Lamp (Long life)
- Low Energy Fluorescent Lamps
- Halogen Low Voltage and Mains Voltage

Ask for more information on the wide range available.

**Independently Fire Tested & Approved to 30, 60 & 90 Minutes**  
90 minutes using Solid Timber Joists  
30 & 60 minutes for 'I' Beam and Metal Web Joists



**FlameGuard**<sup>®</sup>  
system