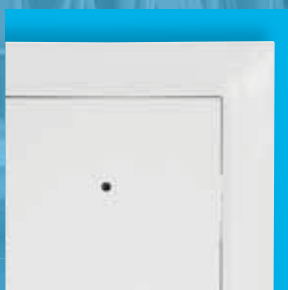
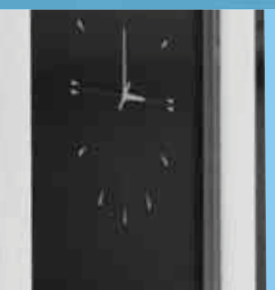




iNELS®



Wireless Control Systems

CLICK®
iNELS®

Transmitters
Combined Modules
Modules
Accessories

SHUTTERS
AND
BLINDS



REMOTE
CONTROL



INELS®

Leading the way in intelligent automation

contents

Transmitters	a9
Combined Modules	a12
Accessories	a17
Programming	a18
Switching & Dimmer Functions	a19
Installation Guidelines	a20

Why Click Inels Wireless?

Significant energy savings

- Complete control and regulation of your heating and lighting means energy is only consumed when needed - reducing your energy bills and your carbon footprint.

Simple & flexible installation

- No additional cables or wall cutting needed. Receivers can be installed behind light fittings or into suitable installation boxes

LIGHTING SCENES



REMOTE CONTROL OF APPLIANCES



ONE TOUCH CONTROL WITH RF TOUCH PANEL

This RF Control unit connects all of your individual RF units together to form an intelligent wiring system. Heating, switching, dimming, curtains / blinds and scenes can be easily visualised and controlled from one single point.

- Flexible positioning makes RF Control ideal for installation within existing or newly constructed buildings. With RF Control, you can move switches freely and re-locate when required. Switches can be mounted on glass, wood or walls etc.
- Transmitters are powered by battery and so do not require any wiring or additional power supply.
- Universal input transmitter converts up to 4 push-button switches - enabling existing devices to be connected to the system.
- Operates on 868MHz frequency band which provides robust communications.

Complete control

- Allows portable and remote control up to a distance of 200m
- Control and adjustment of lights, on/off or create lighting scenes.
- Control shutters, blinds, gates, latches and garage doors
- Manual or automatic control
- Monitor window or door opening
- Simulate occupancy when you are away from home

RF TOUCH

A touch screen control panel for the Click Inels RF Control. The RF Touch provides total centralised control of your RF System. The in-built clock provides the ability to set daily/weekly switching programs and also simulate occupancy when you are away from home.



DIMMING ACTUATOR

Allows the setting of lighting scenes e.g. dimming of lights to create the atmosphere for watching TV.



RFDA-71B

SHUTTER ACTUATOR

Operates the control of shutters, blinds and garage doors.



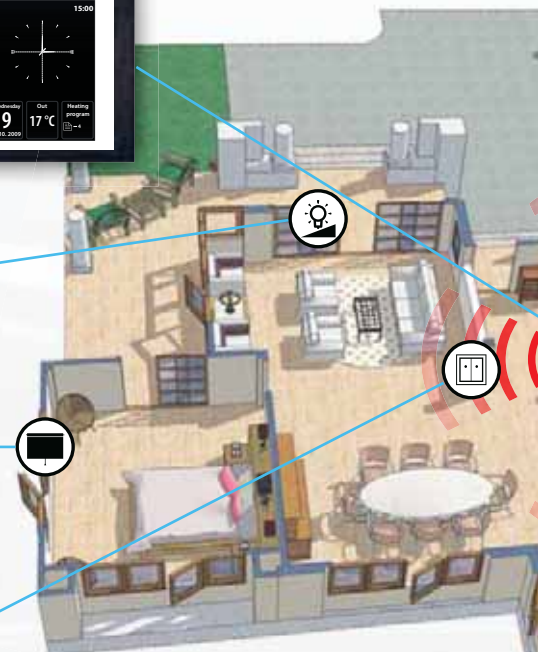
RFJA-12B

WIRELESS PUSH-BUTTONS

These buttons have a flat base allowing them to be mounted on any smooth surface.



RFWB-20/G
RFWB-40/G



Transmitters



RF KEY-W 4 channel RF key fob in white
RF KEY-B 4 channel RF key fob in black



RFWB-20/G 2 channel wireless wall switch in white
RFWB-40/G 4 channel wireless wall switch in white



RFIM-40B 1-4 channel universal transmitter module can be connected to any standard centre retractable switch



* *RFIC-10/G* Wireless room stat



* *RFTI-10B* Wireless thermo-sensor



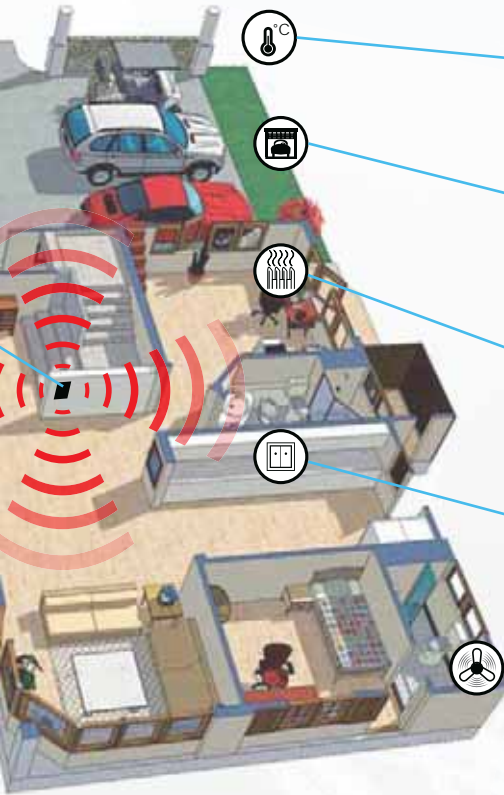
TP-83 Wireless room thermostat c/w programmable 24 hour, 7 day time clock



JA-82 Wireless window / door contact



RF PILOT 40 channel wireless remote controller



THERMO-SENSOR

Monitors ambient temperature where installed and sends data back to the RF Touch unit



RFSTI-10B



RF KEY

Allows portable operation of garage doors, shutters and lights etc.



RF KEY-W
RF KEY-B



DIGITAL THERMOSTAT

Provides auto, manual, day and night programs for complete temperature control of your environment.



RFCTC-10/G



UNIVERSAL INPUT MODULE

Converts a standard wired switch into a wireless control device.



RFIM-40B



SWITCHING RECEIVER

Operates the switching on and off of appliances, sockets, and other electrical devices.



RFSA-61B

Combined Modules



RF Touch-W

Control & visualisation 3.5" touch screen display unit



Combined temperature sensing devices with in-built switch receivers to control the heating circuit.
RFSTI-11/G with manual override

Receivers



RFSA-61B



RFSA-62B

Single and dual channel switching receivers for mounting behind light fittings



RFSA-61M



RFSA-66M

Single and six channel switching receivers for DIN rail mounting in a distribution board



RFDA-71B

Single channel dimming receiver for mounting behind light fittings



RFJA-12B/24Vdc

RFJA-12B/240V

Receiver for the control of 24V dc shutters and blinds
Receiver for the control of 240V shutters and blinds



RFDAC-71B

Receiver for the control of devices / radiator valves by 0-10V analogue control

* FOR USE WITH THE RF TOUCH UNIT ONLY

Transmitters

Wireless switch

Key fob

Universal module



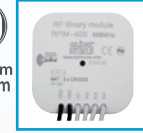
RFWB-20/G
Wall 2-channel controller



RFWB-40/G
Wall 4-channel controller



RF KEY
4-channel remote controller as a key fob



RFIM-40B
Universal input transmitter for use with standard centre retractable switches

∅60mm
∓13mm



RFTC-10/G *
RF transmitter:
Temperature regulator



RFTI-10B *
RF transmitter:
Wireless thermo-sensor



TP-83
Wireless room thermostat
c/w programmable 24 hour,
7 day time clock



JA-82M
Wireless window /
door contact



RF PILOT
40 Channel
Wireless Remote
Controller

∅60mm
∓13mm

Combined modules



RF Touch-W
Wireless central unit RF
Touch-W for mounting
on the surface.
85-230 V AC or adapter
(external) 12 V DC.



RFSTI-11/G *
Wireless 8A switching
actuator with
thermo-sensor.
Complete with manual
override switch



RFSTI-11B *
Wireless 16A switching
actuator with
thermo-sensor.
Version for mounting
into installation box.
230 V AC.

∅60mm
∓21mm

* For use with RF Touch unit only

Receivers

Switching actuators

Dimming actuators

Shutter actuators



RFSA-61B

1-channel multifunction switching actuator.
1x NO/SPST 16A,
6 functions. 230 V AC.

RFSA-62B

2-channel multifunction switching actuator.
2 x NO/SPST 8A,
6 functions. 230 V AC.

RFDA-71B

Multifunction dimming actuator.
7 functions.
230V, 250VA AC.

RFJA-12B/230 V

Shutter actuator.
2x NO/SPST 8A, relay with
protection. 230 V AC.

RFJA-12B/24V DC

Shutter actuator,
contact-free switching.
12-24 V DC.

Analog actuator



RFDAC - 71B

RF receiver: Actuator with
analogue output
0(1) - 10 V.
1x NO/SPST 16A, switches
a phase conductor. 7
functions. 230 V AC.

ALPHA AA 0-10 V

For continuous heating
regulation Control
voltage 0-10 V.

Module



RFSA-61M

1-channel multifunction
switching actuator with
antenna, 1x output 16A
changeover/ SPDT. 6
functions. 230 V AC.

RFSA-66M

6 channel multifunction
switch receiver.
3 x I/O SPST 8A
contacts & 3 x
changeover SPDT 8A
contacts. 6 programmable
functions 230V AC

Accessories



TC

(0°C - 70°C+)

External thermocouples for
use with RFSTI-11G/11-B
& RFTI-10B

TC-3 - Temperature
sensor 3 m (9.8´)

TC-6 - Temperature
sensor 6 m (19.7´)

TC-12 - Temperature
sensor 12 m (39.4´)



TZ

(-40°C - 125°C+)

External thermocouples for
use with RFSTI-11G/11-B &
RFTI-10B

TZ-3 - Temperature
sensor 3 m (9.8´)

TZ-6 - Temperature
sensor 6 m (19.7´)

TZ-12 - Temperature
sensor 12 m (39.4´)



VA

- VA59H - Valve Head adaptor Danfoss RAV/LTZ-3
- VA59 - Valve Head adaptor Danfoss RAV/LTZ-3 9mm pin
- VA72 - Valve Head adaptor Danfoss RAV 9.5mm pin
- VA78 - Valve Head adaptor Danfoss RA
- VA80 - Valve Head adaptor M30 x 1.5
- VA80H - Valve Head adaptor M30 x 1.5 9.5mm pin



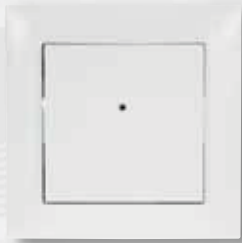
Transmitters

Wireless Switches | Key Fob | Universal Module
Temperature Regulator | Thermo-Sensor &
Thermostat | Window Door Contact |
Remote Controller

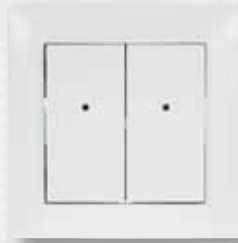
Transmitters are RF system devices powered by batteries and are used for controlling receivers.

Transmitters

Wireless Switch | Key Fob | Universal Input Transmitter



RFWB-20/G



RFWB-40/G



RF KEY-W



RF KEY-B



RFIM-40B

Transmitters

- RFWB-20/G** Wall 2-Channel Controller
- RFWB-40/G** Wall 4-Channel Controller
- RF KEY-W** 4-Channel Remote Key Fob - White
- RF KEY-B** 4-Channel Remote Key Fob - Black
- RFIM-40B** Universal Input Transmitter (Use With Standard Centre 'Off' Retractive Switches)

For the complete range of MiniGrid modules, see the dedicated MiniGrid section, pg h1.

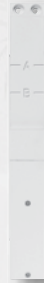
Cable Length: 90mm **Relay Current Ratings:** AC1 Rating



RFTC-10/G



RFTI-10B



JA-82M



TP-83



RF PILOT

* For use with RF Touch unit only

Transmitters

- RFTC-10/G * RF Transmitter: Zone / Room Temperature Regulation / Measuring Device
- RFTI-10B * RF Transmitter: Wireless Thermo-Sensor
- TP-83 Wireless Room Thermostat / 24 Hour 7 Day Time Programmer
- JA-82M Wireless Window / Door Contact
- RF PILOT Wireless 40 Channel Remote Controller

For thermo-sensor accessories see page a17

Relay Current Ratings: AC1 Rating

Combined Modules

Central Unit | Switching Actuator With Thermo-Sensor
 | Multifunction Dimming Actuator With Thermo-Sensor

Combined units are both transmitting & receiving devices in the RF control system.





RF TOUCH-W



RFSTI-11/G



RFSTI-11B

* For use with RF Touch unit only

Combined Modules

RF TOUCH-W Wireless Touch Screen Controller

RFSTI-11/G * 8A Wireless Switching Actuator With Thermo-Sensor, With Manual Override Switch

RFSTI-11B * 16A Wireless Switching Actuator With Thermo-Sensor

For thermo-sensor accessories see page a17

Cable Length: 90mm **Relay Current Ratings:** AC1 Rating



Receivers

Switching Actuator | Dimming Actuator
Shutter Actuator | Analogue Actuator

Receivers are available in three categories - switching actuators, dimming actuators and shutter actuators



RFSFA-61B



RFSFA-62B



RFDFA-71B



RFDAC-71B

Receivers

- RFSFA-61B 16A 1 Channel Multifunction Switching Actuator
- RFSFA-62B 8A 2 Channel Multifunction Switching Actuator
- RFDFA-71B 40-250VA 1 Channel Multifunction Dimming Actuator
- RFDAC-71B 16A 1 Channel Multifunction Switching Actuator Complete With 0-10V Or 1-10V Analogue Output

Cable Length: 90mm Relay Current Ratings: AC1 Rating

Receivers

Switching Actuator | Shutter Actuator

INEL[®]



RFJA-12B/230V



FRJA-12B/24V



RFSA-61M



RFSA-66M

Receivers

RFJA-12B/230V

Shutter Actuator (AC)

FRJA-12B/24V

Shutter Actuator (DC)

RFSA-61M

16A 1 Channel Multifunction Switching Actuator

RFSA-66M

8A 6 Channel Multifunction Switching Actuator

Cable Length: 90mm Relay Current Ratings: AC1 Rating



Accessories

External Thermocouples | Valve Head Adaptor

Accessories compatible with RF control devices.

Accessories

Thermo-sensor | Valve Head Adaptor

INEL[®]



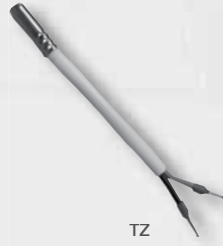
VA



ALPHA AA



TC



TZ

Accessories

ALPHA AA 0-10V Valve Head Driver For Continuous Heating Regulation
(To be used in conjunction with RFDAC-71B)

- VA59H** Valve Head Adaptor Danfoss RAV/LTZ-3
- VA59** Valve Head Adaptor Danfoss RAV/LTZ-3 9mm pin
- VA72** Valve Head Adaptor Danfoss RAV 9.5mm pin
- VA78** Valve Head Adaptor Danfoss RA
- VA80** Valve Head Adaptor M30 x 1.5
- VA80H** Valve Head Adaptor M30 x 1.5 9.5mm pin

Accessories

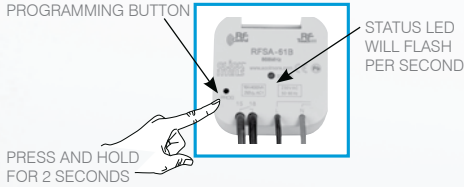
- TC-3** Temperature Sensor 3 m (9.8')
- TC-6** Temperature Sensor 6 m (19.7')
- TC-12** Temperature Sensor 12 m (39.4')
- TZ-3** Temperature Sensor 3 m (9.8')
- TZ-6** Temperature Sensor 6 m (19.7')
- TZ-12** Temperature Sensor 12 m (39.4')

Cable Length: 90mm **Relay Current Ratings:** AC1 Rating

Follow these very simple, easy to follow instructions when programming functions:

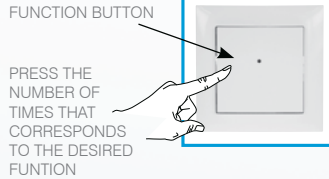
STEP 1 - ACTIVATE

Press & hold the 'programming' button on the receiver for 2 seconds (the status LED will flash with a 1 second interval).



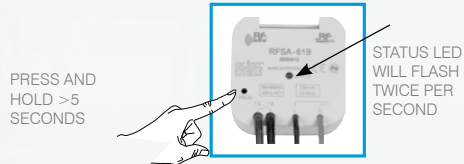
STEP 2 - SELECT FUNCTION

To assign the chosen transmitter device button & function, press the required button the number of times to match the function number required at one second intervals - SEE TABLE 1 on opposite page (e.g for transmitter function 2, press the button 2 times).



STEP 3 - ONLY REQUIRED FOR FUNCTION 5 & 6 FOR ALL OTHER FUNCTIONS GO TO STEP 4

To set the time element, press & hold the 'programming' button again for >5 seconds (the status LED will flash twice in a 1 second interval). THE TIMER HAS NOW STARTED. When the required time period has elapsed, press the previously assigned transmitter button (IN STEP 2) once to confirm.



STEP 4 - SAVE AND EXIT

To exit programming mode press the 'programming' button for 1 second only.



TO DELETE A SINGLE FUNCTION

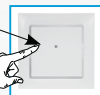
STAGE 1

PRESS AND HOLD FOR 5 SECONDS



STAGE 2

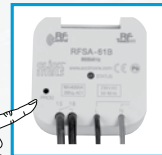
PRESS THE BUTTON THAT CORRESPONDS TO THE DESIRED FUNTION TO DELETE



TO DELETE ALL STORED FUNCTIONS

PRESS AND HOLD 8 SECONDS - THIS WILL DELETE ALL STORED FUNCTIONS.

RELEASE PROGRAMMING BUTTON AND THEN PRESS FOR 1 SECOND TO EXIT



Switching & Dimmer Functions

Switching Functions

Function 1	Press button	Press for ON, release for OFF
Function 2	'On' button	Press for ON
Function 3	'Off' button	Press for OFF
Function 4	On/Off button	Press for ON, press again for OFF
Function 5	'Off' delay	Press for ON, device will turn off after pre-determined time period as set in step 3 of programming (2 secs - 30 mins max)
Function 6	'On' delay	Press to start timer. 'On' delay will be as pre-determined in step 3 of programming (2 secs - 30mins)

Table 1

Dimmer Functions

Press button and release

Press button and hold

Function	Function Description	Press button and release	Press button and hold
Function 1	Scene recall / OFF	Press to recall scene, press to turn OFF	Press button for more than 1 second to set scene brightness
Function 2	Scene recall / OFF - anti-tamper	Press to recall scene, press again to turn OFF	Press button for more than 3 seconds to set scene brightness (avoids accidental scene setting)
Function 3	Scene recall - fade ON / fade OFF - push to recall scene	Press to recall scene	Press button for more than 1 second to set scene brightness
Function 4	Scene recall / fade OFF	Press to recall scene	Press button for more than 1 second to set scene brightness
Function 5	Variable fade up to Max. (user defineable)	Press to start fade up time to maximum brightness	N/A
Function 6	Variable fade down to OFF. (user defineable)	Press to start fade down to OFF	N/A
Function 7	ON/OFF	Press once for ON, press again for OFF	N/A

Table 2 LOAD TYPES

<p>R - RESISTIVE</p>   <p>HAL. 230 V</p>	<p>L - INDUCTIVE</p>  <p>HAL. 12-24 V</p>	<p>C - CAPACITIVE</p> 
--	--	---

To ensure correct and safe operation of a device please follow the installation guidelines below:

- Do not install into an exterior or wet environment
- Ensure sufficient cooling for dimmer loads nearing 250VA - Each receiver has an internal over temperature protection which will switch the device output off when the system is overloaded
- Do not install RF components into metal and steel distribution boards as this will reduce the radio-frequency signal
- The range of radio signal within the RF Control system depends on building construction and physical location of the devices - see table 1 below
- Do not connect inductive and capacitive loads to one device at the same time - see table 2 on previous page.

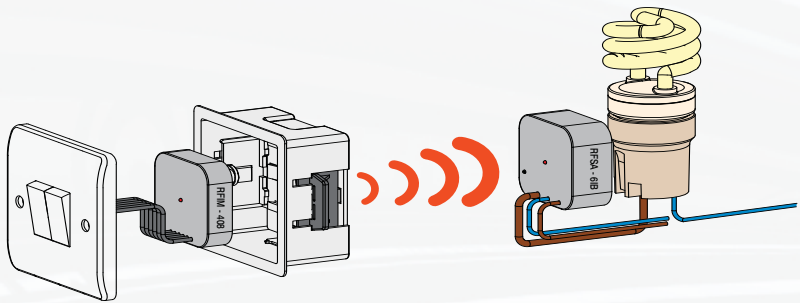


Table 1 TRANSMISSION OF RADIO-FREQUENCY SIGNALS THROUGH VARIOUS MATERIALS

<p>60-90%</p> <p>brick walls</p>	<p>80-95%</p> <p>wooden constructions with plaster boards</p>	<p>20-60%</p> <p>reinforced concrete</p>	<p>0-10%</p> <p>metal bars</p>	<p>80-90%</p> <p>regular glass</p>	<p>RF Control</p>
----------------------------------	---	--	--------------------------------	------------------------------------	--------------------------